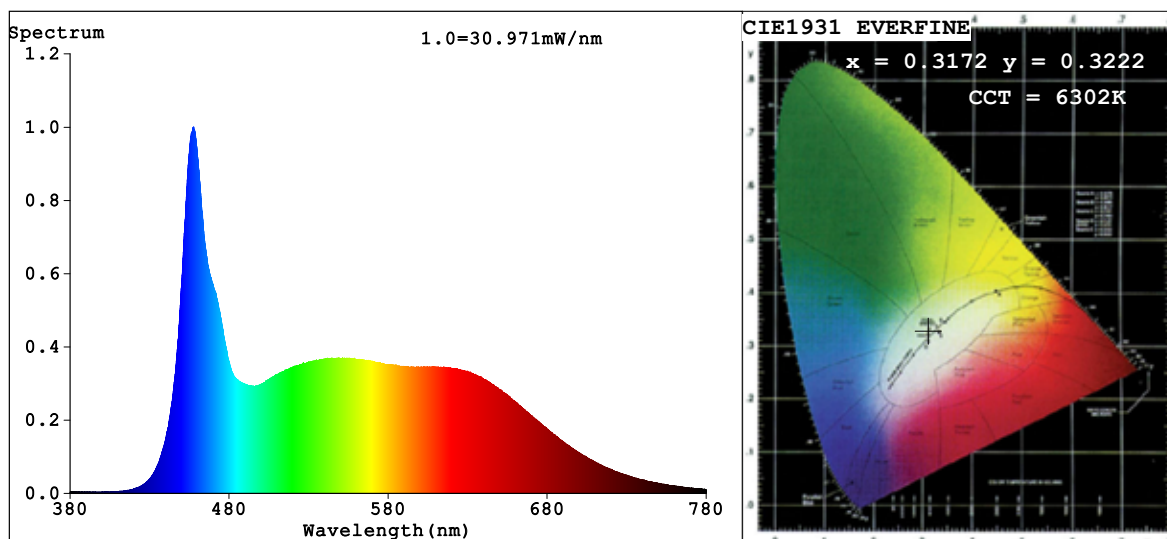


## Spectrum Test Report



### Color Parameters:

Chromaticity Coordinate:  $x=0.3172$   $y=0.3222$   $u'=0.2036$   $v'=0.4653$   
 CCT=6302K (Duv=-0.0027) Dominant WL:  $\lambda_d = 482.2nm$  Purity=6.4%  
 Ratio: R=16.4% G=76.0% B=7.5%; Peak WL:  $\lambda_p = 457.7nm$  FWHM=24.9nm  
 Render Index: Ra=91.8 CRI=90.8 TM30: Rf=87 Rg=99 Lav=549.5nm  
 R1 =94 R2 =94 R3 =96 R4 =88 R5 =91 R6 =91 R7 =89  
 R8 =91 R9 =94 R10=91 R11=92 R12=66 R13=95 R14=99 R15=92

### Photo Parameters:

Flux = 796.2 lm Eff. : 96.71 lm/W  $\Phi_e$  = 2.959 W

### Electrical parameters:

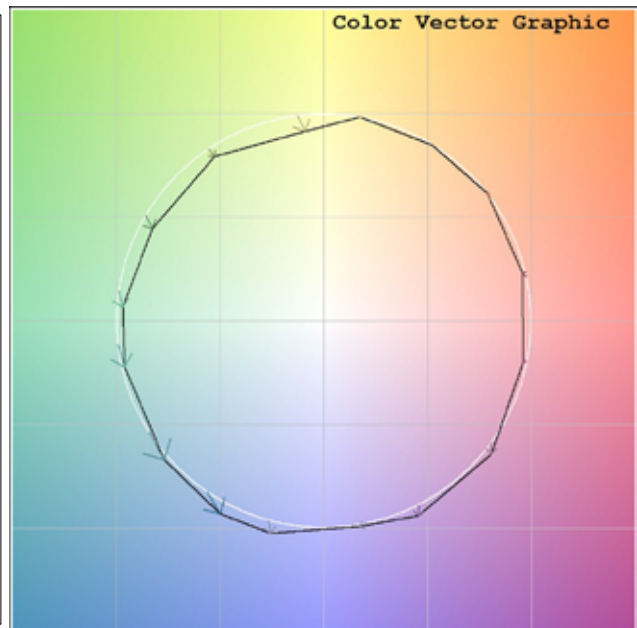
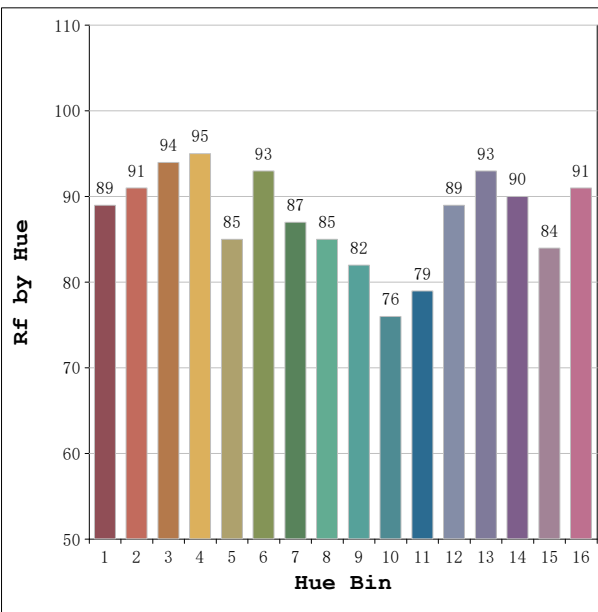
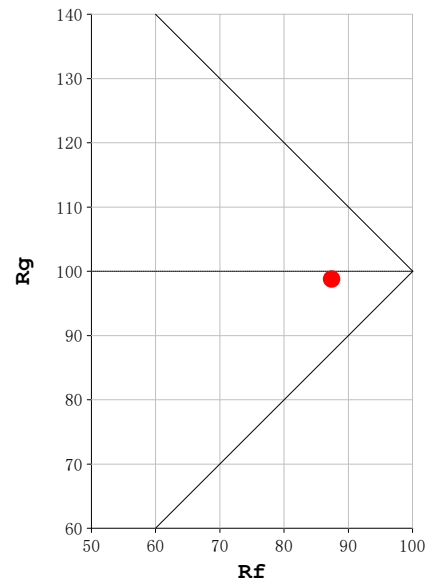
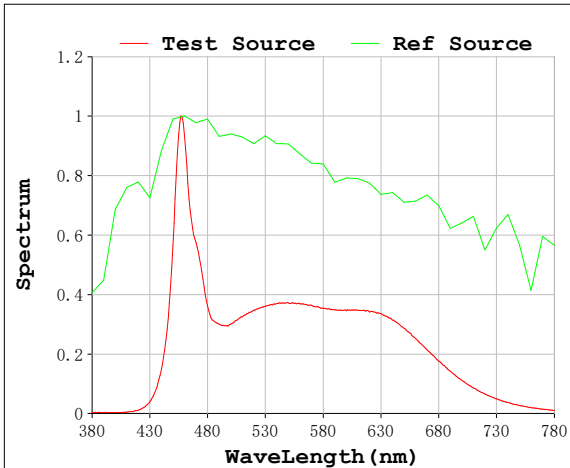
V = 11.998 V I = 0.6862 A P = 8.233 W PF = 1.000

Status: Integral T = 1000 ms  $I_p$  = 47668 (73%)

Model: Ecoled Creta (CW)  
 Tester: Sergio Carneros  
 Temperature: 25Deg  
 Manufacturer: Luz Negra.S.L

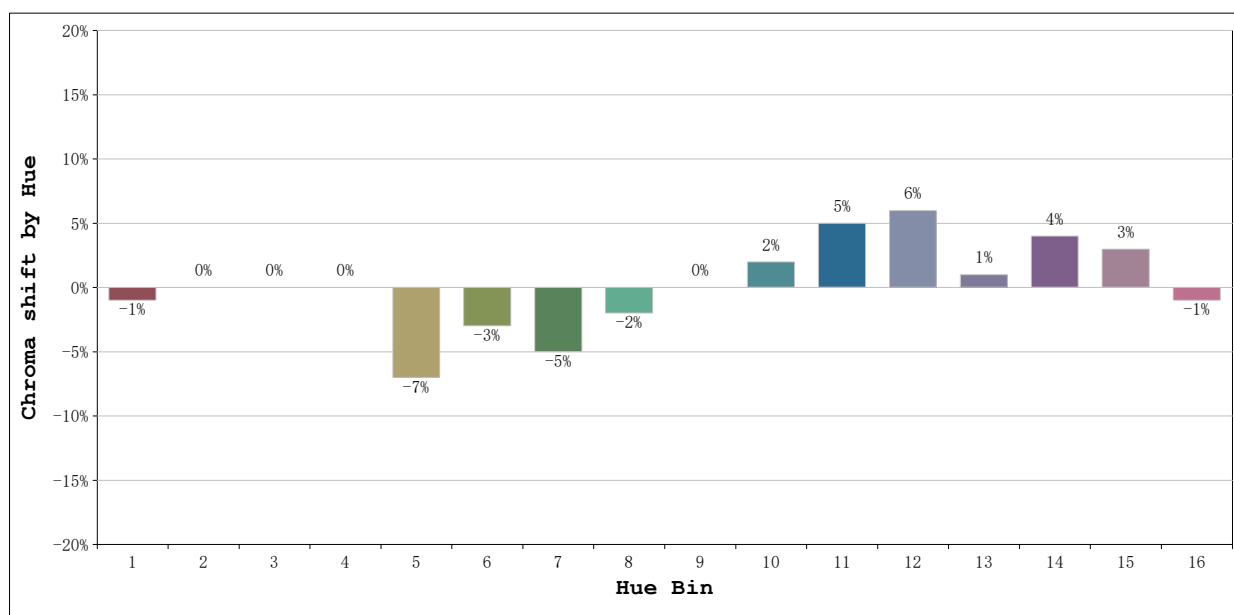
Number: 31.150  
 Date: 01-06-2026  
 Humidity: 57%  
 Remarks: 100cm Tira flexible

**Rf: 87**      **CCT: 6302 K**      **u': 0.2036**  
**Rg: 99**      **Duv: -0.0027**      **v': 0.4653**



**Model:Ecoled Creta (CW)**  
**Tester:Sergio Carneros**  
**Temperature:25Deg**  
**Manufacturer:Luz Negra.S.L**

**Number: 31.150**  
**Date:01-06-2026**  
**Humidity:57%**  
**Remarks:100cm Tira flexible**

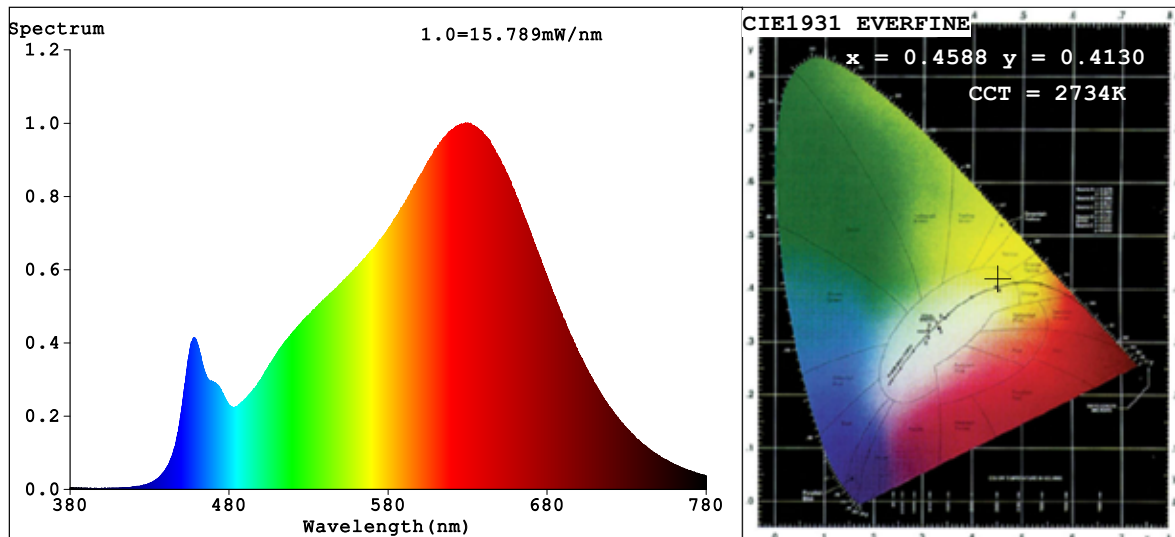


			Graphic shift(%)	
Hue Bin	Hue Angle	Rf	Chroma	Hue
1	0.0° - 22.5°	89	-1	3
2	22.5° - 45.0°	91	0	2
3	45.0° - 67.5°	94	0	1
4	67.5° - 90.0°	95	0	1
5	90.0° - 112.5°	85	-7	-1
6	112.5° - 135.0°	93	-3	0
7	135.0° - 157.5°	87	-5	4
8	157.5° - 180.0°	85	-2	7
9	180.0° - 202.5°	82	0	11
10	202.5° - 225.0°	76	2	15
11	225.0° - 247.5°	79	5	11
12	247.5° - 270.0°	89	6	2
13	270.0° - 292.5°	93	1	-3
14	292.5° - 315.0°	90	4	-2
15	315.0° - 337.5°	84	3	-4
16	337.5° - 360.0°	91	-1	0

**Model:**Ecoled Creta (CW)  
**Tester:**Sergio Carneros  
**Temperature:**25Deg  
**Manufacturer:**Luz Negra.S.L

**Number:** 31.150  
**Date:**01-06-2026  
**Humidity:**57%  
**Remarks:**100cm Tira flexible

## Spectrum Test Report



### Color Parameters:

Chromaticity Coordinate:  $x=0.4588$   $y=0.4130$   $u'=0.2607$   $v'=0.5281$   
 CCT=2734K (Duv=0.0010) Dominant WL:  $\lambda_d = 583.7\text{nm}$  Purity=61.7%  
 Ratio: R=26.4% G=70.8% B=2.7%; Peak WL:  $\lambda_p = 629.6\text{nm}$  FWHM=151.5nm  
 Render Index: Ra=95.1 CRI=93.0 TM30: Rf=90 Rg=97 Lav=610.5nm  
 R1 =96 R2 =99 R3 =100 R4 =94 R5 =95 R6 =98 R7 =93  
 R8 =86 R9 =72 R10=96 R11=96 R12=82 R13=97 R14=99 R15=92

### Photo Parameters:

Flux = 713.8 lm Eff. : 86.44 lm/W  $\Phi_e$  = 2.597 W

### Electrical parameters:

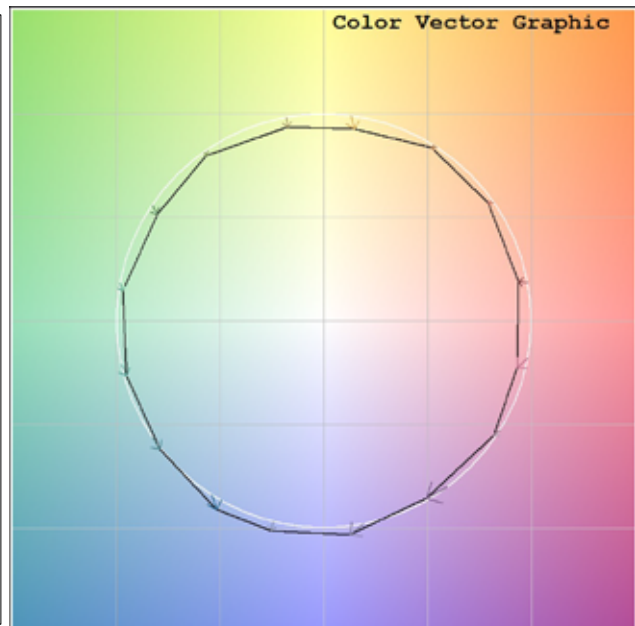
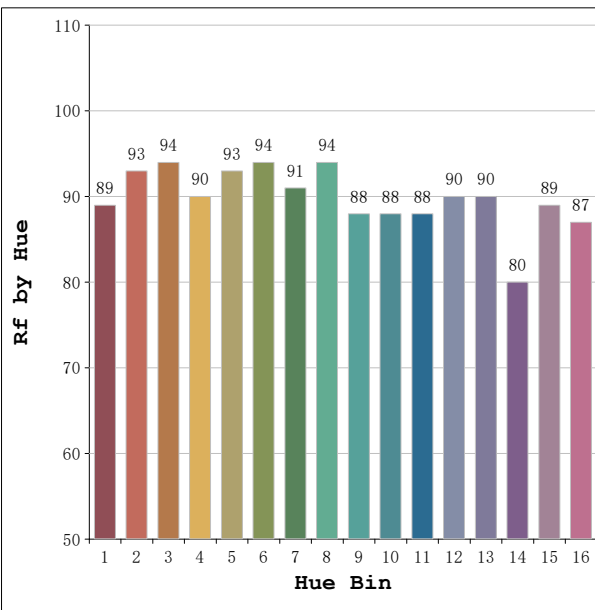
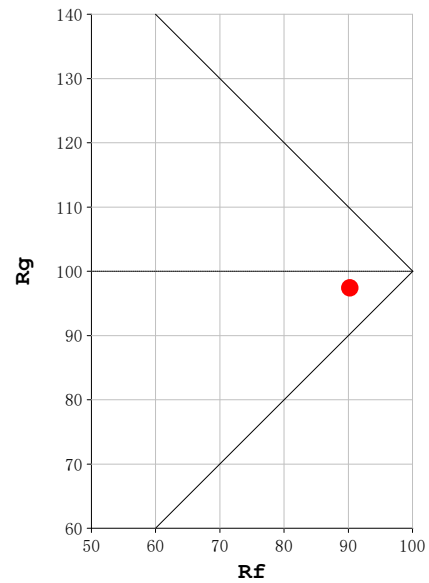
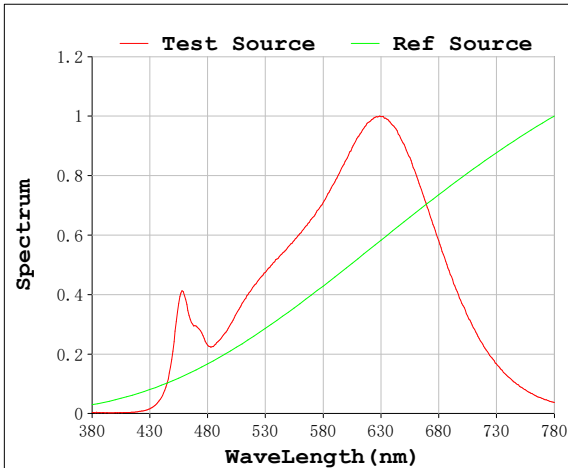
V = 11.998 V I = 0.6883 A P = 8.258 W PF = 1.000

Status: Integral T = 1775 ms  $I_p$  = 52337 (80%)

Model: Ecoled Creta (WW)  
 Tester: Sergio Carneros  
 Temperature: 25Deg  
 Manufacturer: Luz Negra.S.L

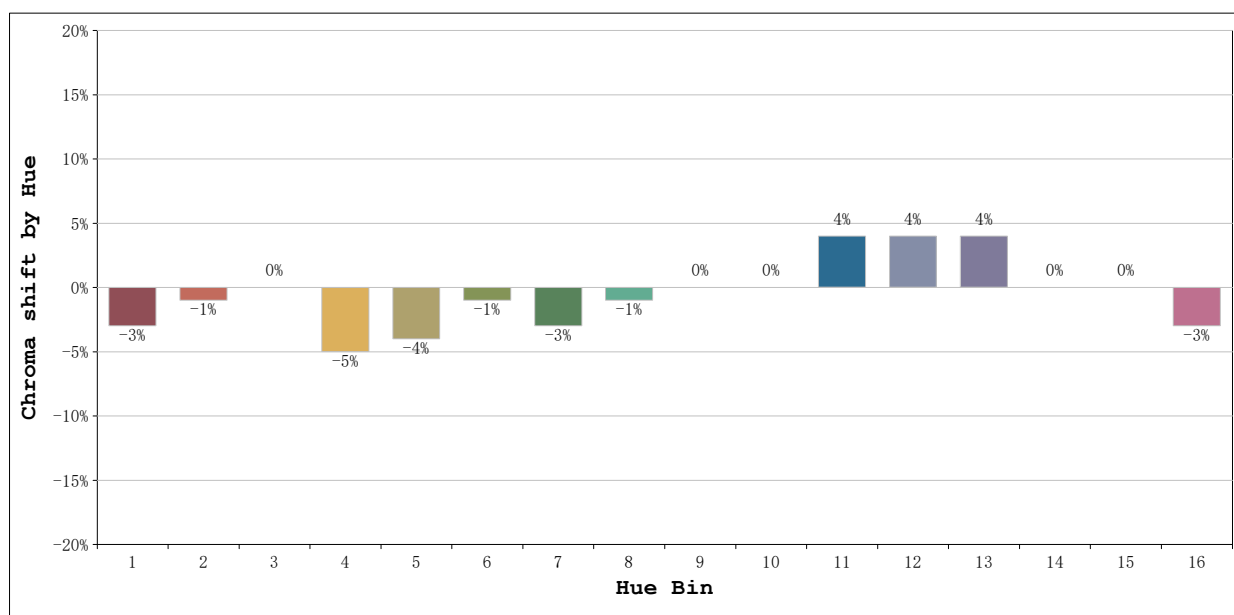
Number: 31.150  
 Date: 01-06-2026  
 Humidity: 57%  
 Remarks: 100cm Tira flexible

**Rf: 90**      **CCT: 2734 K**      **u': 0.2607**  
**Rg: 97**      **Duv: 0.0010**      **v': 0.5281**



**Model:Ecoled Creta (WW)**  
**Tester:Sergio Carneros**  
**Temperature:25Deg**  
**Manufacturer:Luz Negra.S.L**

**Number: 31.150**  
**Date:01-06-2026**  
**Humidity:57%**  
**Remarks:100cm Tira flexible**



			Graphic shift(%)	
Hue Bin	Hue Angle	Rf	Chroma	Hue
1	0.0° - 22.5°	89	-3	2
2	22.5° - 45.0°	93	-1	2
3	45.0° - 67.5°	94	0	2
4	67.5° - 90.0°	90	-5	-2
5	90.0° - 112.5°	93	-4	0
6	112.5° - 135.0°	94	-1	2
7	135.0° - 157.5°	91	-3	2
8	157.5° - 180.0°	94	-1	3
9	180.0° - 202.5°	88	0	6
10	202.5° - 225.0°	88	0	7
11	225.0° - 247.5°	88	4	6
12	247.5° - 270.0°	90	4	0
13	270.0° - 292.5°	90	4	-7
14	292.5° - 315.0°	80	0	-10
15	315.0° - 337.5°	89	0	-3
16	337.5° - 360.0°	87	-3	-5

**Model:**Ecoled Creta (WW)  
**Tester:**Sergio Carneros  
**Temperature:**25Deg  
**Manufacturer:**Luz Negra.S.L

**Number:** 31.150  
**Date:**01-06-2026  
**Humidity:**57%  
**Remarks:**100cm Tira flexible